

Niles Fence and Security, LLC

SECUREX



Securex Fencing

Retro Fit Fencing

Super C Fencing

Diamond Fencing

Security Cages

SECUREX High Security Expanded Metal Fencing

.... Because not all fences are created equal



Niles Fence and Security, LLC is an American manufacturer of expanded metal security panels and high security expanded metal fencing.

Niles makes perimeter security a reality with our anti-cut, anti-climb solutions that work.

Our complete line of expanded metal fencing will help you meet a variety of site specific challenges. All of our styles including SECUREX, Diamond, Super-C and Retro-Fit can be customized using different diamond patterns and fittings to address the full spectrum of security challenges.

At Niles, your security fence is our only job.



SECUREX

Niles Fence and Security
301 N. Pleasant Avenue, Niles, Ohio 44446
info@nilesfence.com 800-321-7464 f:330-299-0329
WWW.NILESFENCE.COM

Niles Fence and Security
1- 800- 321-7464



The mission of Niles Fence & Security Products, LLC is to develop and distribute expanded metal fence systems that meet and exceed our customers' expectations.

At Niles, we believe expanded metal fences have infinite possibilities. We pledge to you that we will commit all of our experience, imagination and technology to making your ideas a reality.



Niles Fence & Security Products, LLC is an ISO 9001:2008 certified company and works with the full support and experience of Niles Expanded Metals and Plastics, an established leader in expanded metal products.

Our design team is available to provide detailed drawings and specifications for your projects. We pledge to work with you to find the precise materials required to meet both your security and aesthetic needs.



For written specifications, detailed drawings or additional technical information please contact us directly.

Because not all fences are created equal.... choose expanded metal.

Choose Niles Fence and Security.



Niles Fence and Security is a proud member of the American Fence Association





SECUREX High Security Expanded Metal Mesh Products

SECURITY FENCING

| | |
|-----------------|---|
| SECUREX Fence | 4 |
| Retro Fit Fence | 5 |
| Super C Fence | 6 |
| Diamond Fence | 7 |

SECURITY CAGES AND PARTITIONS

| | |
|--------------------------------|---|
| SX3000 - Cages | 8 |
| HVAC and Electrical Enclosures | 9 |

SECURITY MESH

| | |
|-----------------------|----|
| Exterior Applications | 10 |
| Interior Applications | 11 |

SECURITY BUILDING PRODUCTS

| | |
|---------------------------------------|----|
| Railing - Safety and Machine Guarding | 12 |
| Wall Spikes | 13 |

ARCHITECTURAL EXPANDED METAL 14

EXPANDED METAL SECURITY PANELS AND GATES 15

HOW TO ORDER 16-17

MESH 18-20

SECURITY CAGE PANELS 21

SECURITY FITTINGS 22-27

Niles Fence and Security, LLC

301 N. Pleasant Avenue, Niles, Ohio 44446 info@nilesfence.com 800-321-7464 f:330-299-0329

WWW.NILESFENCE.COM



SECUREX Security Fencing

High Security Expanded Metal Fencing

SECUREX High Security Fencing is an expanded metal fence used for applications that require the maximum level of perimeter security. SECUREX is the industrial solution for high traffic areas and critical infrastructure protection.

SECUREX fencing features a round rail fence framework design with the added strength and security of anti-cut, anti-climb high security expanded metal mesh panels. When attached with our security fittings, SECUREX expanded metal fencing significantly increases physical security and deters access to areas that may have been vulnerable to attack.



Recommended Expanded Metal Patterns

1" #7 R
1/2" #13 R

3/4" #9 R
1/2" #13 (.188)R



- Round rail, industry standard fence framework which meets ASTM 2548-12
- Simple to install, difficult to breach
- Fittings available for standard or heavy duty applications
- Multiple diamond patterns and mesh size options for different levels of security requirements
- Single panel heights to 12'. Custom sizing, layouts and additional panel heights available by request





Retro Fit Security Fencing



Security Fencing Upgrade

Retro Fit security fencing was designed to increase security where circumstances require an upgrade to perimeter controls.

Retro fit fencing adds high security expanded metal panels to either steel palisade or chain link fence framework. In most cases the expanded metal panels can attach directly over currently installed chain link with the simple addition of a series of fittings. Fittings are available for various frameworks styles including, round, square, C posts and H posts.



Recommended Expanded Metal Patterns

3/4" #9R

1/2" #13R



- Ability to utilize fence framework already set in place
- Quickly and easily can be used to increase the overall height of the fence
- Can be used over chain link or added alone after chain link is removed
- Single panel heights to 12'





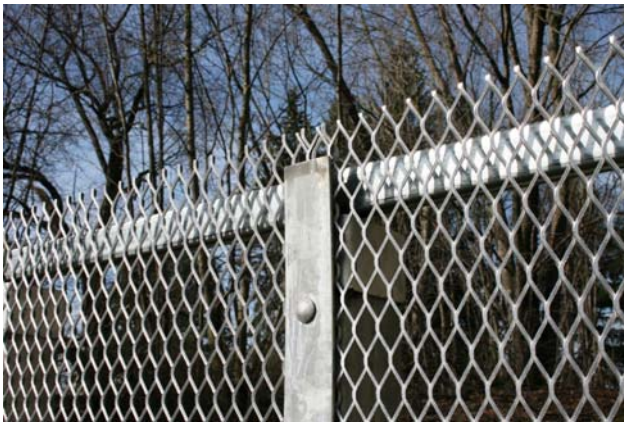
Super C Expanded Metal Fencing

Expanded Metal Anchoring

SECUREX Super-C High Security Fencing was designed for ease of installation and features high strength roll formed line posts and rails.

The strength of the Super-C system couples our .150 heavy wall c-posts with steel cover straps or clamps for the heaviest expanded metal anchoring in the industry.

Specified for use by ASTM-F1043, the posts and rails on this design make these posts stronger than Schedule 40 round pipe. Additionally, the c-form self anchoring drive construction saves both time and money because the posts can be driven, instead of concreted into the ground. Our durable open post and rail design also helps eliminate moisture inside the rails reducing maintenance, leading to significant savings over time.



Recommended Expanded Metal Patterns
1" #7R 3/4" #9R 1/2" #13R

- Ideal for self anchoring drive construction, saves time and money
- .150 heavy wall posts meet ASTM F1043, AASHTO M181, FAA-F162, CEGS 02831 and RRF191/3E
- Uses square rail fittings and cover strap for concealed anchoring of expanded metal panels
- Single panel heights up to and including 12'





Diamond Expanded Metal Fencing



Commercial and Industrial Fencing

Diamond architectural expanded metal fence is the aesthetic option when security and style matter.

The Diamond fence style features round posts, c-channel rails and our specialized fittings that offer the security of expanded metal - with style.

Diamond expanded metal security fencing is substantially stronger than other fence options and is recommended for use at corporate or manufacturing facilities where security is paramount.

Recommended Expanded Metal Patterns

1/2" #13R 3/4" #9R 1-1/2" #9R 2" #9R



- Industry standard round posts
- 13/16" x 1-5/8" roll formed line rails
- Stainless steel breakaway nuts and bolts
- Multiple expanded metal mesh infill options - including decorative and architectural patterns
- Single panel heights up to and including 12'

All expanded metal panels available in your choice of finish: Galvanized, black or green powder coated





SX3000 Expanded Metal Interior Cages or Partitions

Interior Security Cages

Our SX3000 expanded metal security cages offer the maximum in theft protection while providing strength, visibility and ventilation. Featuring a post and panel design, our security cages offer the flexibility to choose a configuration that best suits your needs and are available with or without ceilings.

Our expanded metal security cage panels feature structural stability that can accommodate site specific challenges, including beams and structures already in place. In a standard installation, 4'h x 8'w panels are stacked horizontally and attach to square posts with included hardware. The SX3000 security cage system is able to accommodate heights up to 30' and is available with your choice of hinged doors, sliding doors or service windows.



Recommended Expanded Metal Patterns

3/4" #9R

1/2" #13R

3/4" #9F

1/2" #13F



- Meets OSHA physical barrier requirements
- For DEA enclosures - SX3000 meets physical security controls for class III, IV and V controlled substances as outlined in Title 21 CFR Sections 1301.72-1301.76 of the US Department of Justice code
- Permits free passage of light, heat, air and sound while offering solid protection from theft or burglary



SX3000 Security Cages are available in standard gray or black powder coat. Custom colors on request.



Expanded Metal Exterior Cages

Exterior Security Cages, Expanded Metal protection for HVAC units



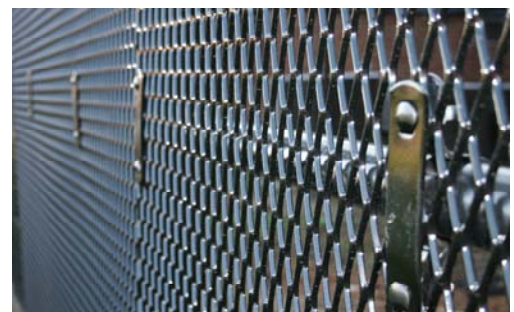
Exterior expanded metal security cages feature our standard size diamond expanded metal and work in conjunction with industry standard pipe framework. Use expanded metal exterior cages when ventilation and security is critical. Multiple configurations, including ceilings and interior partitions for limited access personnel, offer durable security solutions.



Recommended Expanded Metal Patterns

3/4" #9R
3/4" #9F

1/2" #13R
1/2" #13F



All expanded metal panels available in your choice of finish: Galvanized or black powder coated



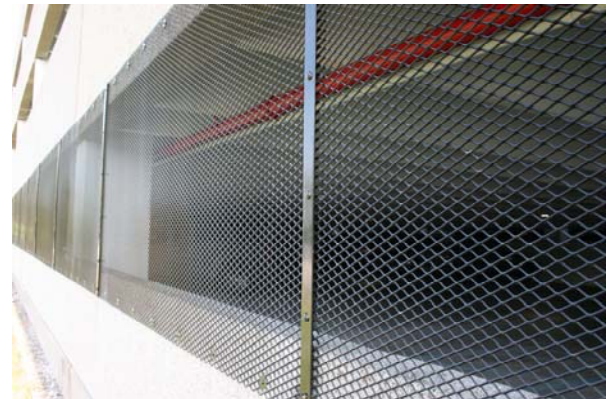


Security Mesh - Exterior

Security mesh for exterior applications

Exterior expanded metal security mesh is primarily designed for use at parking garages and mezzanines.

Exterior security mesh can also be used to increase security on exterior windows, window wells, doors, gables and other openings where small animals or children may try to gain access to a secure area.



Recommended Expanded Metal Patterns

3/4" #9R

1/2" #13R

3/4" #9F

1/2" #13F

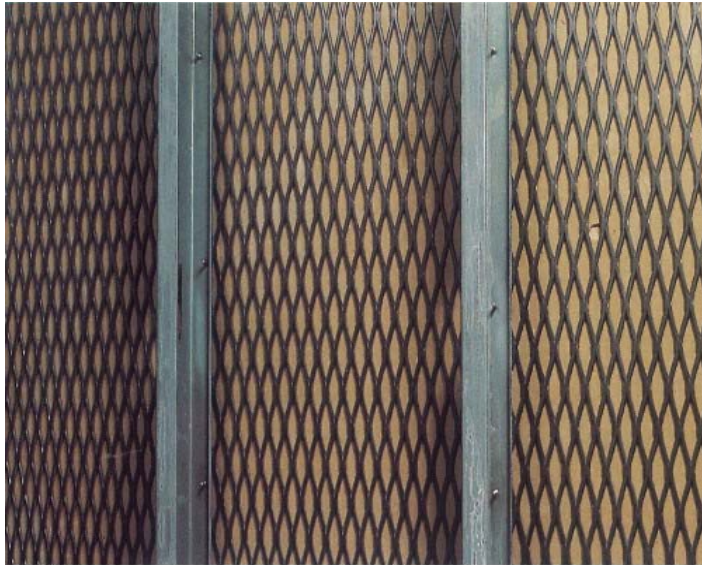
- Used to create a safety and security barrier
- Encourages clear site lines while providing protection
- Different fitting options available, including coverstraps and u-edging for site specific applications



All expanded metal panels available in your choice of finish: Galvanized, black or green powder coated



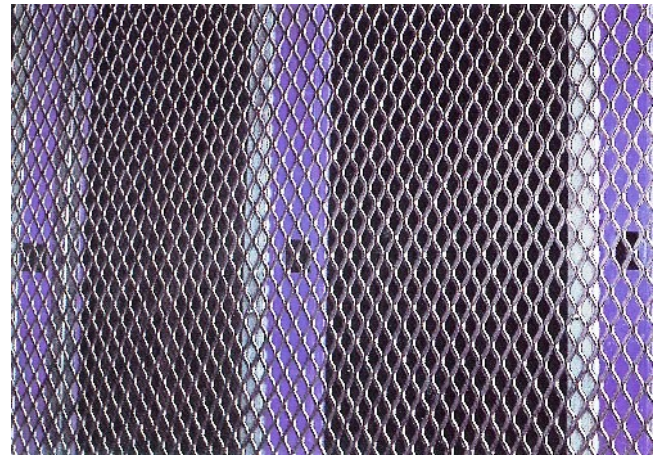
Security Mesh - Interior



Security Mesh for Walls

Expanded metal security mesh panels by Niles are used to provide strength and security *inside* walls, floors and ceilings. Standard panels attach to wall studs with SECUREX clips and create a steel barrier inside the finished drywall.

Use security mesh to protect valuable areas and add a layer of protection from theft.



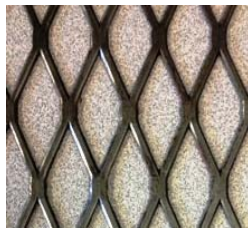
SECUREX SECURITY CLIPS
SECUREX2375CLIP



SECUREX SECURITY CLIPS
SECUREX3CLIP



1/2 #13 FLAT



3/4 #13 FLAT



3/4 #9 FLAT



1 #16 FLAT



1 1/2 #9 FLAT

- **Can be formed to accommodate all wall heights and configurations**
- **Stock sizes available for immediate shipment**
- **Easily attaches to metal or wood wall studs and floor joists**
- **Use for banks, panic rooms, government buildings and retail stores**

All expanded metal panels available in mill finish carbon or stainless steel





Security Railing

Safety railing for mezzanines and machine guarding

SECUREX safety railing uses expanded metal to solve safety and access issues in both industrial and commercial environments.

Commercial - Expanded metal design options include all of our architectural as well as industrial diamond design patterns. Panels are shipped individually and are available with or without safety u-edging.



Industrial panels - Our expanded metal safety railing is designed for use around manufacturing machinery. Coupled with other security controls, SECUREX safety railing is a cost-effective method of protecting workers and facilities.

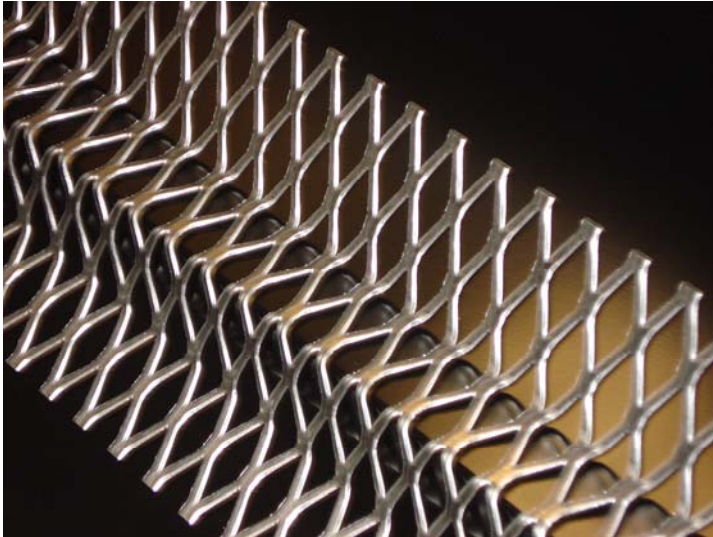


- For machine guarding, helps meet OSHA physical barrier standards
- Available in all architectural and industrial mesh diamond patterns
- Available with or without safety u-edging
- Custom design available
- Multiple fittings and attachment methods available





Security Spikes



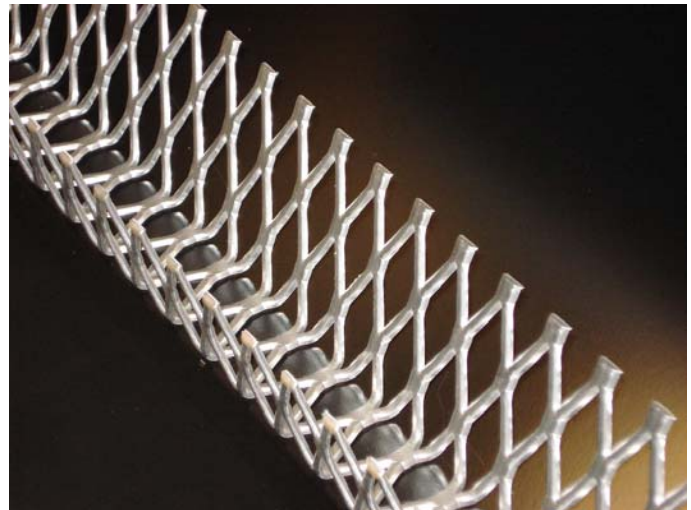
SECUREX Wall Spikes

Security spikes for walls and fencing

Bird Deterrent and Wall Spikes were created to stop security threats at the top of walls or fencing. Our security spikes are available in two grades and in two designs for different levels of protection.

Recommended Expanded Metal Patterns
3/4" #9 F 1-1/2" #9F

SECUREX wall spikes are an alternate option to barbed or razor wire and ship in 4' or 5' lengths. The expanded metal of the wall spikes are random sheared at the top to create a formidable and sharp edge along any square framed surface. Use the wall spikes at the edge of retaining walls or on panel based fencing for maximum security without the look of barbed wire.



SECUREX Bird Deterrent

Designed as a light use deterrent for animals, SECUREX bird deterrent spikes make it difficult for birds or small animals to perch at the edge of retaining walls or square frame fencing. The standard edging exposes 3" - 4" above grade but custom cuts and bending are available.

- **Can be custom bent or manufactured to alternate specifications**
- **Available in stock sizes of 4' or 5' long pieces**

All expanded metal wall spikes available in mill finish, galvanized or stainless steel. Custom powder coating available upon request.





Architectural and Design Mesh

Security mesh for exterior applications

SECUREX architectural expanded metal is available in multiple sizes and design patterns for both interior and exterior use.

Exterior Applications

Solar Screening - Architectural screens can be used on the exterior of buildings to help deflect light and heat or to enhance building design.
Cladding - Use expanded metal to enhance aesthetics and create buildings that are works of art.



Interior Applications

Interior expanded metal panels can be used decoratively or functionally to diffuse sound and light or as a safety barrier on mezzanines and stairs.



- Can help buildings meet LEED requirements
- Wide range of diamond patterns and materials available
- Custom material and patterns available upon request



All expanded metal panels available in your choice of steel, stainless steel or aluminum.
Powder coating available upon request.



Security Gates

Security Gates and panels for UL 325 compliance



SECUREX expanded metal fence systems feature a complete line of high security gates.



SECUREX delivers several gate options including completely welded systems or expanded metal security panels and fittings which can be added to gate framing in the field.



Standard security gates are available in swing, slide and cantilever options. Additionally, we offer pre-hung security gates with a panic bar for safe and easy emergency exit situations.



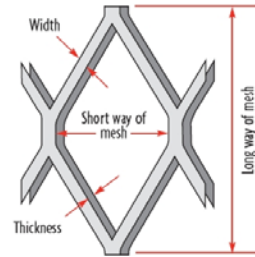
Expanded metal panels for UL-325 compliance are also available by individual sheets. Standard sizing which meets industry safety standards include 3/4" #9 and 1/2" #13 diamond patterns.



Explaining Expanded Metal Mesh Security Panels

Expanded Metal is produced from solid sheets or plates of carbon, galvanized and stainless steel, as well as aluminum and a variety of alloys of copper, nickel, silver, titanium and other metals. Because expanded metal is made from a solid sheet of metal, and it is not woven or welded - it can never unravel.

To produce expanded metal, a sheet or plate is simultaneously slit and stretched. This process expands the cuts into diamond shaped holes of uniform size and shape. Because no metal is lost in the expanding process, expanded metal is cost effective and saves energy by conserving material and allowing the fabrication to go further and do more.



When choosing expanded metal for your fence application, you will need to determine which style or diamond size is best for your application. Expanded metal designations are indicated by SWD (the measurement on the short way of diamond), while the second number may specify the gauge of metal, the weight per hundred sq. foot, or have some other significance.

Another consideration when ordering expanded metal mesh panels is the actual metal strand width and metal strand thickness. These are important because they contribute the actual opening size of the diamond and the % open area or visibility through the fence. Niles Fence has standardized this for fencing applications and below is a comprehensive table of nominal weights and dimensions.

| STYLE | GALVANIZED | DIAMOND SIZE | | DIAMOND OPENING SIZE | | STRAND SIZE | | % |
|---|------------|--------------|------|----------------------|-------|-------------|-----------|-------|
| | WEIGHT PER | (INCHES) | | (INCHES) | | (INCHES) | | OPEN |
| | SQ. FOOT | SWD | LWD | SWO | LWO | WIDT H | THICKNESS | AREA |
| Standard - Carbon Steel | | | | | | | | |
| 1/2" -13R | 1.74 | 0.500 | 1.20 | 0.312 | 0.938 | 0.096 | 0.090 | 57 |
| 1/2"-13R (.188) | 3.1 | 0.500 | 1.20 | 0.220 | 0.630 | 0.188 | 0.090 | 25 |
| 3/4"-9R | 1.98 | 0.923 | 2.00 | 0.688 | 1.562 | 0.150 | 0.134 | 68 |
| 1"-7R (.240) | 3.7 | 1.000 | 2.40 | 0.650 | 1.600 | 0.240 | 0.170 | 52 |
| 1"-7R (.300) | 4.79 | 0.875 | 2.20 | 0.450 | 1.550 | 0.275 | 0.183 | 39-41 |
| 1-1/2" -6R | 2.75 | 1.330 | 3.00 | 1.110 | 2.313 | 0.203 | 0.194 | 69 |
| 1-1/2" -9R | 1.31 | 1.330 | 3.00 | 1.125 | 2.375 | 0.144 | 0.134 | 76 |
| 2"-9R | 0.99 | 1.850 | 4.00 | 1.563 | 3.375 | 0.149 | 0.134 | 84 |
| Flattened - Carbon Steel | | | | | | | | |
| 1/2" - 13F | 1.61 | 0.500 | 1.25 | 0.265 | 1.000 | 0.107 | 0.078 | 52 |
| 3/4"- 9F | 1.88 | 0.923 | 2.10 | 0.563 | 1.688 | 0.165 | 0.120 | 63 |
| 1-1/2"- 9F | 1.25 | 1.330 | 3.20 | 1.000 | 2.563 | 0.158 | 0.110 | 75 |
| Stainless Steel - (nominal weight only, no galvanize) #304 | | | | | | | | |
| 1/2" -13R | 1.87 | 0.480 | 1.20 | 0.270 | 0.830 | 0.113 | 0.093 | 52 |
| 3/4"-9R | 2.05 | 0.923 | 2.00 | 0.687 | 1.562 | 0.160 | 0.140 | 67 |
| 1-1/2" -9R | 1.37 | 1.330 | 3.00 | 1.125 | 2.500 | 0.155 | 0.140 | 77 |
| Flattened Stainless Steel - (nominal weight only, no galvanize) #304 | | | | | | | | |
| 1/2" -13R | 1.78 | 0.48 | 1.26 | 0.220 | 0.970 | 0.128 | 0.080 | 47 |
| 3/4"-9R | 1.95 | 0.923 | 2.10 | 0.562 | 1.697 | 0.165 | 0.119 | 61 |
| 1-1/2" -9R | 1.31 | 1.330 | 3.15 | 0.937 | 2.625 | 0.165 | 0.119 | 75 |
| Aluminum - (nominal weight only, no galvanize) | | | | | | | | |
| 1/2" - .081 | 0.44 | 0.500 | 1.20 | 0.375 | 0.937 | 0.096 | 0.081 | 60 |
| 3/4" - .125 | 0.65 | 0.923 | 2.00 | 0.687 | 1.680 | 0.169 | 0.125 | 68 |
| 1-1/2" - .125 | 0.43 | 1.330 | 3.00 | 1.187 | 2.500 | 0.162 | 0.125 | 79 |
| Flattened Aluminum - (nominal weight only, no galvanize) | | | | | | | | |
| 1/2" - .081 | 0.42 | 0.500 | 1.27 | 0.312 | 1.000 | 0.105 | 0.060 | 58 |
| 3/4" - .125 | 0.62 | 0.923 | 2.13 | 0.625 | 1.750 | 0.187 | 0.095 | 62 |
| 1-1/2" - .125 | 0.41 | 1.330 | 3.15 | 1.000 | 2.750 | 0.181 | 0.095 | 70 |

How to order Expanded Metal Mesh Security Panels

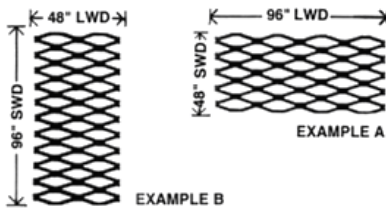
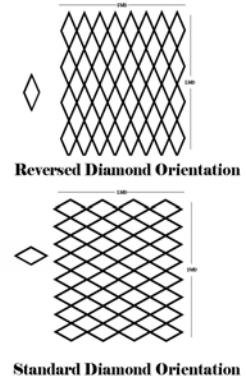
In fencing applications, the orientation of the diamonds creates a different look to the final fence.

In addition to the SWD or short way diamond, there is also a measurement known as the LWD (long way of diamond). The orientation of these diamonds impacts the way you order material.

Expanded metal mesh panels can be hung in one of two ways - standard or reversed diamond orientation. SECUREX recommends a reversed diamond orientation for most applications.

For fencing purposes, expanded metal is ordered SWD x LWD. When ordering expanded metal mesh panels, please give the complete style specifications to avoid possible error. Include style, standard or flattened, the type of metal, sheet dimensions and finish.

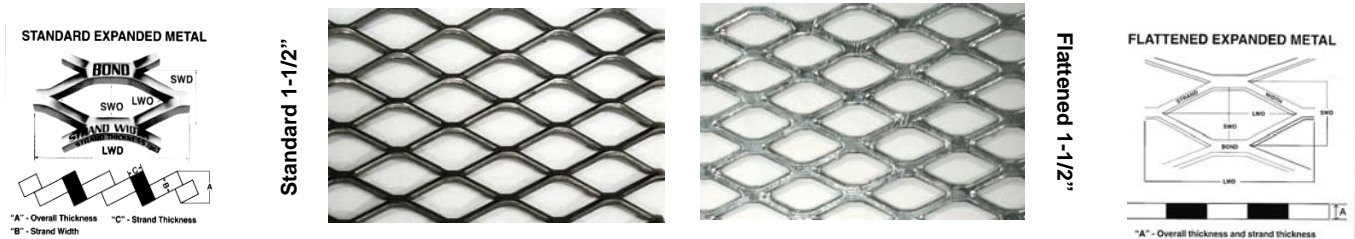
Ordered correctly, a 4' x 8' piece of mesh would look like the reversed diamond orientation piece you see to the right.



This illustration shows the importance of specifying which dimensions are SWD and LWD.

Standard expanded metal mesh (abbreviated S, Std or R) is expanded metal as it comes off the press. The production method is what gives the metal additional strength and rigidity and is recommended for fence applications.

Flattened expanded metal (abbreviated F) is manufactured by passing the metal through a cold roll reducing mill parallel to the LWD. By flattening the sheet, the bonds and strands are turned down to produce a smooth and flat surface – essentially elongating the LWD of the diamond. This material is best used for barriers, gate applications and interior wall security mesh.



STOCK SIZE SHEETS

STANDARD MESH TOLERANCES

SWD: Plus 3/16" minus 0" per foot of width.
LWD: + 1/2" - 0"

FLATTENED MESH TOLERANCES

SWD: Plus 3/16" minus 0" per foot of width.
LWD: + 3/4" - 0"

CAMBER - Is a bow in the sheet. Measured by placing a straight edge along the concave side of the sheet parallel to LWD, touching both ends of the sheet. The maximum distance between the edge of the expanded metal and the straight edge is the camber.

CAMBER TOLERANCE

Standard expanded metal 1/16" per foot of length.
Flattened expanded metal 3/32" per foot of length.

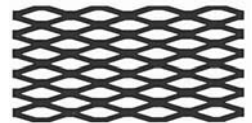
OUT OF SQUARE - Expanded metal sheets are not perfectly square as manufactured. Stock size sheets and machine run non-standard size sheets will be produced to the following tolerances.

SWD: 1/16" per foot of width.
LWD: 1/16" per foot of length.

NON-STANDARD SIZES

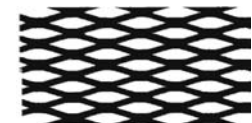
MACHINE RUN

When tolerances permit, Niles can machine run non-standard sheet sizes to the same tolerances as stock size sheets. Unless otherwise specified, the material will be produced to a plus (+) tolerance however the material can be produced to a minus (-) tolerance if requested.



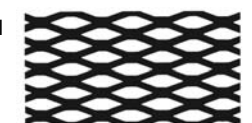
RANDOM SHEARING

Stock size sheets and special sizes should be random sheared when a closer tolerance is desired. Normal mill tolerance for standard and flattened expanded metal is plus (+) or minus (-) 1/16". Material that is random sheared leaves open diamonds in most cases.



BOND SHEARING

When certain applications require closed diamonds and the quantities do not economically justify special mill runs, bond shearing can sometimes be performed, WITHIN LIMITATIONS, resulting in closed diamond edges. Because of the diamond design and angle, standard expanded metal should not be bond sheared SWD and must be machine run to size.



Expanded Metal - Galvanized - Steel - Fencing and Gate Applications

Standard and flattened expanded metal panels are available in several stock sizes and normally ship 24-48 from the day of order. All expanded metal diamond patterns can be produced to custom sizes to meet job requirements. Maximum height per panel is 144". Maximum width on most panels is 96". There is no stocking minimum and panels are available per job lot. Please call your representative for current pricing.

| PART # | DESCRIPTION |
|--|--|
| GALVANIZED EXPANDED METAL SECURITY PANELS - STEEL | |
| STANDARD - RAISED | |
| F012013SGALV | 1/2 #13 STD GALVANIZED (CUSTOM SIZE) |
| F012013S57GALV | 1/2 #13 STD 60 X 84 GALVANIZED |
| F012013S48GALV | 1/2 #13 STD 48 X 96 GALVANIZED |
| F012013S58GALV | 1/2 #13 STD 60 X 96 GALVANIZED |
| F012013S68GALV | 1/2 #13 STD 72 X 96 GALVANIZED |
| F012013S510GALV | 1/2 #13 STD 60 X 120 GALVANIZED |
| F012013S610GALV | 1/2 #13 STD 72 X 120 GALVANIZED |
| F034009S56GALV | 3/4 #9 STD 60 X 72 GALVANIZED |
| F034009SGALV | 3/4 #9 STD GALVANIZED (CUSTOM SIZE) |
| F034009S57GALV | 3/4 #9 STD 60 X 84 GALVANIZED |
| F034009S38GALV | 3/4 #9 STD 36 X 96 GALVANIZED |
| F034009S48GALV | 3/4 #9 STD 48 X 96 GALVANIZED |
| F034009S58GALV | 3/4 #9 STD 60 X 96 GALVANIZED |
| F034009S68GALV | 3/4 #9 STD 72 X 96 GALVANIZED |
| F034009S88GALV | 3/4 #9 STD 96 X 96 GALVANIZED |
| F034009S410GALV | 3/4 #9 STD 48 X 120 GALVANIZED |
| F034009S510GALV | 3/4 #9 STD 60 X 120 GALVANIZED |
| F034009S610GALV | 3/4 #9 STD 72 X 120 GALVANIZED |
| F100007SGALV | 1 #7 STD GALVANIZED (CUSTOM SIZE) |
| F100007S48GALV | 1 #7 STD 48 X 96 GALVANIZED |
| F100007S240GALV | 1 #7 STD .240 GALVANIZED (CUSTOM SIZE) |
| F100007S48240LWDGALV | 1 #7 STD 48 X 96 .240 LWD GALVANIZED |
| F100007S300GALV | 1 #7 STD 48 X 96 .300 GALVANIZED (CUSTOM SIZE) |
| F112009SGALV | 1-1/2 #9 STD GALVANIZED (CUSTOM SIZE) |
| F112009S68GALV | 1-1/2 #9 STD 72 X 96 GALVANIZED |
| F112006SGALV | 1-1/2 #6 STD GALVANIZED (CUSTOM SIZE) |
| F012013S188GALV | 1/2 #13 STD .188 GALVANIZED (CUSTOM SIZE) |
| F200009SGALV | 2 #9 STD GALVANIZED (CUSTOM SIZE) |
| FLATTENED | |
| F012013FGALV | 1/2 #13 FLAT GALVANIZED (CUSTOM SIZE) |
| F012013F48GALV | 1/2 #13 FLAT 48 X 96 GALVANIZED |
| F034009FGALV | 3/4 #9 FLAT GALVANIZED (CUSTOM SIZE) |
| F034009F48GALV | 3/4 #9 FLAT 48 X 96 GALVANIZED |
| F034013FGALV | 3/4 #13 FLAT GALVANIZED (CUSTOM SIZE) |
| F034013F48GALV | 3/4 #13 FLAT 48 X 96 GALVANIZED |
| F034013F510GALV | 3/4 #13 FLAT 60 X 120 GALVANIZED |

Expanded metal mesh shall be subject to standard manufacturing tolerances. Standard Mesh: +/- 3/16" per foot of width on the SWD, +/- 1/2"-0" on LWD. Flattened Mesh +/- 3/16" per foot of width on the SWD, +/- 3/4" on LWD.

Expanded Metal - Mill Finish - Interior Security Mesh Panels

| PART # | DESCRIPTION | PART # | DESCRIPTION |
|---|----------------------------|--------------------------|---------------------------|
| MILL FINISH EXPANDED METAL SECURITY PANELS - STEEL | | | |
| FLATTENED | | STANDARD - RAISED | |
| F014018F48 | 1/4 #18 FLAT 48 X 96 | F012013S57 | 1/2 #13 STD 60 X 84 |
| F012013F48 | 1/2 #13 FLAT 48 X 96 | F012013S48 | 1/2 #13 STD 48 X 96 |
| F012013F58 | 1/2 #13 FLAT 60 X 96 | F012013S58 | 1/2 #13 STD 60 X 96 |
| F012013F410 | 1/2 #13 FLAT 48 X 120 | F012013S68 | 1/2 #13 STD 72 X 96 |
| F012013F510 | 1/2 #13 FLAT 60 X 120 | F012013S410 | 1/2 #13 STD 48 X 120 |
| F034013F48 | 3/4 #13 FLAT 48 X 96 | F012013S510 | 1/2 #13 STD 60 X 120 |
| F034013F58 | 3/4 #13 FLAT 60 X 96 | F034013S48 | 3/4 #13 STD 48 X 96 |
| F034013F410 | 3/4 #13 FLAT 48 X 120 | F034013S410 | 3/4 #13 STD 48 X 120 |
| F034013F510 | 3/4 #13 FLAT 60 X 120 | F034013S610 | 3/4 #13 STD 72 X 120 |
| F034009F48 | 3/4 #9 FLAT 48 X 96 | F034009S56 | 3/4 #9 STD 60 X 72 |
| F034009F58 | 3/4 #9 FLAT 60 X 96 | F034009S48 | 3/4 #9 STD 48 X 96 |
| F034009F310 | 3/4 #9 FLAT 36 X 120 | F034009S58 | 3/4 #9 STD 60 X 96 |
| F034009F410 | 3/4 #9 FLAT 48 X 120 | F034009S410 | 3/4 #9 STD 48 X 120 |
| F034009F510 | 3/4 #9 FLAT 60 X 120 | F034009S510 | 3/4 #9 STD 60 X 120 |
| F100016F48 | 1 #16 FLAT 48 X 96 | F100007S48 | 1 #7 STD 48 X 96 |
| F112009F48 | 1-1/2 #9 FLAT 48 X 96 | F112009S48 | 1-1/2 #9 STD 48 X 96 |
| F112009F58 | 1-1/2 #9 FLAT 60 X 96 | F112009S68 | 1-1/2 #9 STD 72 X 96 |
| F112009F410 | 1-1/2 #9 FLAT 48 X 120 | F112009S410 | 1-1/2 #9 STD 48 X 120 |
| F112009F510 | 1-1/2 #9 FLAT 60 X 120 | F112009S610 | 1-1/2 #9 STD 72 X 120 |
| F034009F | 3/4 #9 FLAT (CUSTOM SIZE) | F034009S | 3/4 #9 STD (CUSTOM SIZE) |
| F012013F | 1/2 #13 FLAT (CUSTOM SIZE) | F012013S | 1/2 #13 STD (CUSTOM SIZE) |

Expanded Metal - Black Powder Coated Steel Stock Mesh Panels

| PART # | DESCRIPTION |
|---|--|
| BLACK POWDER COATED EXPANDED METAL SECURITY PANELS - STEEL | |
| STANDARD - RAISED | |
| F012013S38BLACKPC | 1/2 #13 STD 36 X 96 - BLACK POWDER COATED |
| F012013S48BLACKPC | 1/2 #13 STD 48 X 96 - BLACK POWDER COATED |
| F012013S58BLACKPC | 1/2 #13 STD 60 X 96 - BLACK POWDER COATED |
| F012013S410BLACKPC | 1/2 #13 STD 48 X 120 - BLACK POWDER COATED |
| F034009S56BLACKPC | 3/4 #9 STD 60 X 72 - BLACK POWDER COATED |
| F034009S38BLACKPC | 3/4 #9 STD 36 X 96 - BLACK POWDER COATED |
| F034009S48BLACKPC | 3/4 #9 STD 48 X 96 - BLACK POWDER COATED |
| F034009S58BLACKPC | 3/4 #9 STD 60 X 96 - BLACK POWDER COATED |
| F034009S410BLACKPC | 3/4 #9 STD 48 X 120 - BLACK POWDER COATED |
| F034009S510BLACKPC | 3/4 #9 STD 60 X 120 - BLACK POWDER COATED |
| F034009S610BLACKPC | 3/4 #9 STD 72 X 120 - BLACK POWDER COATED |

Expanded metal mesh shall be subject to standard manufacturing tolerances. Standard Mesh: +/- 3/16" per foot of width on the SWD, +/- 1/2"-0" on LWD. Flattened Mesh +/- 3/16" per foot of width on the SWD, +/- 3/4" on LWD.

Expanded Metal - Aluminum and Stainless Steel Stock Panels

| PART # | DESCRIPTION |
|--|----------------------------|
| ALUMINUM EXPANDED METAL SECURITY PANELS | |
| F012081F48 | 1/2 081 FLAT 48 X 96 ALUM |
| F012081F410 | 1/2 081 FLAT 48 X 120 ALUM |
| F012081S48 | 1/2 081 STD 48 X 96 ALUM |
| F034081F48 | 3/4 081 FLAT 48 X 96 ALUM |
| F034081S48 | 3/4 081 STD 48 X 96 ALUM |
| F034125F48 | 3/4 125 FLAT 48 X 96 ALUM |
| F034125F410 | 3/4 125 FLAT 48 X 120 ALUM |
| F034125S48 | 3/4 125 STD 48 X 96 ALUM |
| F100190S48 | 1 190 STD 48 X 96 ALUM |
| F100190S412 | 1 190 STD 48 X 144 ALUM |

| PART # | DESCRIPTION |
|---|------------------------------|
| STAINLESS STEEL EXPANDED METAL SECURITY PANELS | |
| T-304 STAINLESS STEEL | |
| F012016S48304 | 1/2 #16 STD 48 X 96 - 304 |
| F012013S48304 | 1/2 #13 STD 48 X 96 -304 |
| F034013F48304 | 3/4 #13 FLAT 48 X 96 - 304 |
| F034013F410304 | 3/4 #13 FLAT 48 X 120 - 304 |
| F034013S48304 | 3/4 #13 STD 48 X 96 - 304 |
| F034009F48304 | 3/4 #9 FLAT 48 X 96 -304 |
| F034009F410304 | 3/4 #9 FLAT 48 X 120 - 304 |
| F034009S48304 | 3/4 #9 STD 48 X 96 -304 |
| F112009F48304 | 1-1/2 #9 FLAT 48 X 96 - 304 |
| F112009F410304 | 1-1/2 #9 FLAT 48 X 120 - 304 |
| T-316 STAINLESS STEEL | |
| F012016S48316 | 1/2 #16 STD 48 X 96 - 316 |
| F012013S48316 | 1/2 #13 STD 48 X 96 - 316 |
| F034013F48316 | 3/4 #13 FLAT 48 X 96 - 316 |
| F034013S48316 | 3/4 #13 STD 48 X 96 -316 |
| F034009F48316 | 3/4 #9 FLAT 48 X 96 -316 |
| F034009S48316 | 3/4 #9 STD 48 X 96 - 316 |
| F112009F48316 | 1-1/2 #9 FLAT 48 X 96 - 316 |

Aluminum and Stainless Steel stock panels are available for immediate shipment.

Alternate sizes and thicknesses are available for special order.

Call for more information and pricing.

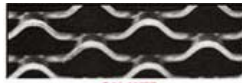
Expanded Metal - Architectural Mesh

| PART # | DESCRIPTION |
|--|--------------------|
| ARCHITECTURAL MESH AND CLADDING - STEEL | |
| F012016SUNSHADE | 1/2 #16 SUNSHADE |
| F112016SUNSHADE | 1-1/2 #16 SUNSHADE |
| F031620LOUVER | 3/16 #20 LOUVER |
| F300VERTEX | 3-1/2 X 8 VERTEX |
| F078016SQUARE | 7/8 #16 SQUARE |
| F058016SQUARE | 5/8 #16 SQUARE |
| F012018GALAXIE | 1/2 #18 GALAXIE |
| F012018VIKING | 1/2 #18 VIKING |
| F014022ECHO | 1/4 #22 ECHO |
| F012016RHYTHM | 1/2 #16 RHYTHM |
| F112016RHYTHM | 1-1/2 #16 RHYTHM |
| F112013RHYTHM | 1-1/2 #13 RHYTHM |
| F112009RHYTHM | 1-1/2 #9 RHYTHM |
| F012016SURF | 1/2 #16 SURF |
| F100016CRESCENDO | 1 #16 CRESCENDO |

| PART # | DESCRIPTION |
|---|---------------------------|
| ARCHITECTURAL MESH AND CLADDING - ALUMINUM | |
| F112051SUNSHADE | 1-1/2 051 SUNSHADE ALUM |
| F112081SUNSHADE | 1-1/2 081 SUNSHADE ALUM |
| F0316040LOUVER | 3/16 040 LOUVER ALUM |
| F300125VERTEX | 3-1/2 X 8 125 VERTEX ALUM |
| F300190VERTEXMAX | 3-1/2 X 8 190 VERTEX ALUM |
| F078081SQUARE | 7/8 081 SQUARE ALUM |
| F058081SQUARE | 5/8 081 SQUARE ALUM |
| F012051GALAXIE | 1/2 051 GALAXIE ALUM |
| F012040VIKING | 1/2 040 VIKING ALUM |
| F112081RHYTHM | 1-1/2 081 RHYTHM ALUM |
| F112125RHYTHM | 1-1/2 125 RHYTHM ALUM |
| F012081SURF | 1/2 081 SURF ALUM |
| F012081CRESCENDO | 1/2 081 CRESCENDO ALUM |
| F100081CRESCENDO | 1 081 CRESCENDO ALUM |
| F100125CRESCENDO | 1 125 CRESCENDO ALUM |



ECHO



GALAXIE



SUNSHADE



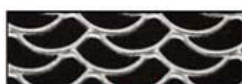
LOUVER



SQUARE



RHYTHM



SURF



VIKING



CRESCENDO

Expanded Metal - Security Cage Panels and Doors - Interior

Security cage panels and partitions are welded into angle iron frames which are pre-drilled to align with our standard 2" square frame posts. All posts have the floor flange already welded and are ready for immediate installation.

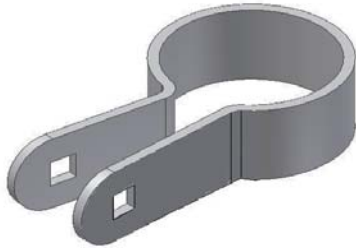
| HEIGHT | 8' 3-1/4" | | 10' 3-1/4" | |
|---|-----------|--|------------|-----|
| PANELS | # | wt | # | wt |
| 10' WIDE | SP40X | 105 | SP50X | 126 |
| 9' WIDE | SP49X | 95 | SP59X | 115 |
| 8' WIDE | SP48X | 86 | SP58X | 104 |
| 7' WIDE | SP47X | 75 | SP57X | 90 |
| 6' WIDE | SP46X | 66 | SP56X | 79 |
| 5' WIDE | SP45X | 54 | SP55X | 65 |
| 4' WIDE | SP44X | 45 | SP54X | 54 |
| 3' WIDE | SP43X | 36 | SP53X | 43 |
| 2' WIDE | SP42X | 27 | SP52X | 32 |
| 1' WIDE | SP41X | 18 | SP51X | 21 |
| USE 2 PANELS (STACKED) BETWEEN POSTS | | | | |
| POSTS | # | wt | # | wt |
| 90° CORNER | SPTC01 | 16 | SPTC02 | 20 |
| LINE | SPTL01 | 16 | SPTL02 | 20 |
| SWING DOOR | SPTH01 | 16 | SPTH02 | 20 |
| SLIDE DOOR | SPTSD01 | 16 | SPTSD02 | 20 |
| 3-WAY POST | SPTT01 | 16 | SPTT02 | 20 |
| EACH POST INCLUDE QTY 2, 3/8" X 3" WEDGE FLOOR ANCHORS | | | | |
| SWING DOORS | # | wt | # | wt |
| 7' HIGH X 3' WIDE | SHD38X | 98 | SHD30X | 112 |
| 7' HIGH X 4' WIDE | SHD48X | 122 | SHD40X | 141 |
| INCL. 1' TRANSOM PANEL | | INCL. 3' TRANSOM PANEL | | |
| SLIDE DOORS | # | wt | # | wt |
| 3' WIDE | SSD38X | 129 | SSD30X | 147 |
| 4' WIDE | SSD48X | 152 | SSD40X | 174 |
| 5' WIDE | SSD58X | 192 | SSD50X | 218 |
| 8' WIDE | SSD88X | 311 | SSD80X | 353 |
| 10' WIDE | SSD08X | 372 | SSD00X | 423 |
| FULL HT DOOR (NO TRANSOM) | | FULL HT DOOR (NO TRANSOM) | | |
| LOCK OPTIONS | # | wt | # | wt |
| SWING DOOR | SWPLAR | 1 | H2 | 2 |
| SLIDE DOOR | SDPLAR | 6 | S2 | 2 |
| PADLOCK ARRANGEMENT | | CYLINDER LOCK - KEYED DIFFERENT | | |

Standard cage panels include 3/4 #9 raised expanded metal and are powder coated gray. Cage panels are also available in 1/2 #13 expanded metal diamond pattern and in alternate coatings. Please call for pricing, quotes and assistance with design layout and applications.

SECUREX Fence Fittings Retro Fit Fence Fittings

RETRO BANDS

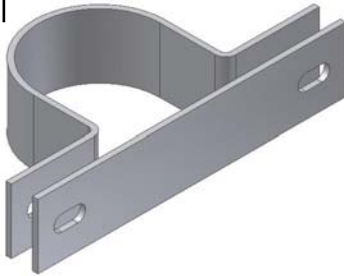
For use with all Securex and Retro Fit round rail fence frameworks



- Retro Bands are approximately 7/8" longer than industrial tension bands and are used to attach expanded metal mesh to terminal posts.
- Fittings are available in standard or heavy duty grade, galvanized or black powder coated. Vinyl coated fittings and alternate colors are available upon request.
- For estimating, use one band less than the height of the fence. Use (1) 3/8" x 2" bolt for regular grade fittings or use (1) 5/8" x 2" bolt for heavy duty grade. Nuts and bolts do not ship with fittings.
- All fittings are also available in Niles standard green powder coat. Please add a "G" before the code number.

| PART # | DESCRIPTION |
|-----------------------------------|---|
| STANDARD FITTINGS - 11GA | |
| RETRO BAND15 | BAND FOR ROUND RAIL 1-5/8" - 11GA - REGULAR - GALVANIZED |
| RETRO BAND2 | BAND FOR ROUND RAIL 2" - 11GA - REGULAR - GALVANIZED |
| RETRO BAND25 | BAND FOR ROUND RAIL 2-1/2" - 11GA - REGULAR - GALVANIZED |
| RETRO BAND3 | BAND FOR ROUND RAIL 3" - 11GA - REGULAR - GALVANIZED |
| RETRO BAND35 | BAND FOR ROUND RAIL 3-1/2" - 11GA - REGULAR - GALVANIZED |
| RETRO BAND4 | BAND FOR ROUND RAIL 4" - 11GA - REGULAR - GALVANIZED |
| RETRO BAND45 | BAND FOR ROUND RAIL 4-1/2" - 11GA - REGULAR - GALVANIZED |
| RETRO BAND6 | BAND FOR ROUND RAIL 6-5/8" - 11GA - REGULAR - GALVANIZED |
| RETRO BAND8 | BAND FOR ROUND RAIL 8-5/8" - 11GA - REGULAR - GALVANIZED |
| BRETRO BAND15 | BAND FOR ROUND RAIL 1-5/8"-11GA - REGULAR - BLACK POWDER COATED |
| BRETRO BAND2 | BAND FOR ROUND RAIL 2"-11GA - REGULAR - BLACK POWDER COATED |
| BRETRO BAND25 | BAND FOR ROUND RAIL 2-1/2"-11GA - REGULAR - BLACK POWDER COATED |
| BRETRO BAND3 | BAND FOR ROUND RAIL 3"-11GA - REGULAR - BLACK POWDER COATED |
| RETRO BAND35 | BAND FOR ROUND RAIL 3-1/2"-11GA - REGULAR - BLACK POWDER COATED |
| BRETRO BAND4 | BAND FOR ROUND RAIL 4"-11GA - REGULAR - BLACK POWDER COATED |
| RETRO BAND45 | BAND FOR ROUND RAIL 4-1/2"-11GA - REGULAR - BLACK POWDER COATED |
| BRETRO BAND6 | BAND FOR ROUND RAIL 6-5/8"-11GA - REGULAR - BLACK POWDER COATED |
| BRETRO BAND8 | BAND FOR ROUND RAIL 8-5/8" - 11GA - REGULAR - BLACK POWDER COATED |
| HEAVY DUTY FITTINGS - 10GA | |
| HRETRO BAND2 | BAND FOR ROUND RAIL 2"-10GA - HVY DUTY - GALVANIZED |
| HRETRO BAND25 | BAND FOR ROUND RAIL 2-1/2"-10GA - HVY DUTY - GALVANIZED |
| HRETRO BAND3 | BAND FOR ROUND RAIL 3"-10GA - HVY DUTY - GALVANIZED |
| HRETRO BAND35 | BAND FOR ROUND RAIL 3-1/2"-10GA - HVY DUTY - GALVANIZED |
| HRETRO BAND4 | BAND FOR ROUND RAIL 4"-10GA - HVY DUTY - GALVANIZED |
| HRETRO BAND45 | BAND FOR ROUND RAIL 4-1/2"-10GA - HVY DUTY - GALVANIZED |
| HRETRO BAND5 | BAND FOR ROUND RAIL 5"-10GA - HVY DUTY - GALVANIZED |
| HRETRO BAND6 | BAND FOR ROUND RAIL 6-5/8"-10GA - HVY DUTY - GALVANIZED |
| BHRETRO BAND8 | BAND FOR ROUND RAIL 8-5/8" -10GA - HVY DUTY - GALVANIZED |
| BHRETRO BAND2 | BAND FOR ROUND RAIL 2"-10GA - HVY DUTY - BLACK POWDER COATED |
| BHRETRO BAND25 | BAND FOR ROUND RAIL 2-1/2"-10GA - HVY DUTY - BLACK POWDER COATED |
| BHRETRO BAND3 | BAND FOR ROUND RAIL 3"-10GA - HVY DUTY - BLACK POWDER COATED |
| BHRETRO BAND35 | BAND FOR ROUND RAIL 3-1/2"-10GA - HVY DUTY - BLACK POWDER COATED |
| BHRETRO BAND4 | BAND FOR ROUND RAIL 4"-10GA - HVY DUTY - BLACK POWDER COATED |
| BHRETRO BAND45 | BAND FOR ROUND RAIL 4-1/2"-10GA - HVY DUTY - BLACK POWDER COATED |
| BHRETRO BAND5 | BAND FOR ROUND RAIL 5"-10GA - HVY DUTY - BLACK POWDER COATED |
| BHRETRO BAND6 | BAND FOR ROUND RAIL 6-5/8"-10GA - HVY DUTY - BLACK POWDER COATED |
| BHRETRO BAND8 | BAND FOR ROUND RAIL 8-5/8"-10GA - HVY DUTY - BLACK POWDER COATED |

SECUREX Fence Fittings Retro Fit Fence Fittings



RETRO C-CLAMPS

For use with all Securex and Retro-Fit round rail fence frameworks

- Retro C-Clamps attach expanded metal panels to both line posts and rails.
- Fittings are available in standard or heavy duty grade, galvanized or black powder coated. Vinyl coated fittings and alternate colors are available upon request.
- For estimating on line posts, use two clamps less than the height of the fence. On rails, space clamps every 12-15". Use (2) 3/8" x 2" bolt for regular grade fittings or use (2) 5/8" x 2" bolt for heavy duty grade. Nuts and bolts do not ship with fittings.
- All fittings are also available in Niles standard green powder coat. Please add a "G" before the code number.

| PART # | DESCRIPTION |
|-----------------------------------|---|
| STANDARD FITTINGS - 11GA | |
| RETRO C-CLAMP15 | C-CLAMP FOR ROUND 1-5/8"- 11GA - REGULAR - GALVANIZED |
| RETRO C-CLAMP2 | C-CLAMP FOR ROUND 2"- 11GA - REGULAR - GALVANIZED |
| RETRO C-CLAMP25 | C-CLAMP FOR ROUND 2-1/2"- 11GA - REGULAR - GALVANIZED |
| RETRO C-CLAMP3 | C-CLAMP FOR ROUND 3"- 11GA - REGULAR - GALVANIZED |
| RETRO C-CLAMP35 | C-CLAMP FOR ROUND 3-1/2" - 11GA - REGULAR - GALVANIZED |
| RETRO C-CLAMP4 | C-CLAMP FOR ROUND 4"- 11GA - REGULAR - GALVANIZED |
| RETRO C-CLAMP45 | C-CLAMP FOR ROUND 4-1/2" - 11GA - REGULAR - GALVANIZED |
| RETRO C-CLAMP6 | C-CLAMP FOR ROUND 6-5/8"- 11GA - REGULAR - GALVANIZED |
| RETRO C-CLAMP8 | C-CLAMP FOR ROUND 8-5/8"-11GA - REGULAR - GALVANIZED |
| BRETRO C-CLAMP15 | C-CLAMP FOR ROUND 1-5/8"-11GA - REGULAR - BLACK POWDER COATED |
| BRETRO C-CLAMP2 | C-CLAMP FOR ROUND 2"-11GA - REGULAR - BLACK POWDER COATED |
| BRETRO C-CLAMP25 | C-CLAMP FOR ROUND 2-1/2"-11GA - REGULAR - BLACK POWDER COATED |
| BRETRO C-CLAMP3 | C-CLAMP FOR ROUND 3"-11GA - REGULAR - BLACK POWDER COATED |
| BRETRO C-CLAMP35 | C-CLAMP FOR ROUND 3-1/2" - 11GA - REGULAR - BLACK POWDER COATED |
| BRETRO C-CLAMP4 | C-CLAMP FOR ROUND 4"-11GA - REGULAR - BLACK POWDER COATED |
| BRETRO C-CLAMP45 | C-CLAMP FOR ROUND 4-1/2" - 11GA - REGULAR - BLACK POWDER COATED |
| BRETRO C-CLAMP6 | C-CLAMP FOR ROUND 6-5/8"-11GA - REGULAR - BLACK POWDER COATED |
| BRETRO C-CLAMP8 | C-CLAMP FOR ROUND 8-5/8"-11GA - REGULAR - BLACK POWDER COATED |
| HEAVY DUTY FITTINGS - 10GA | |
| HRETRO C-CLAMP15 | C-CLAMP FOR ROUND 1-5/8"-10GA - HVY DUTY - GALVANIZED |
| HRETRO C-CLAMP2 | C-CLAMP FOR ROUND 2"-10GA - HVY DUTY - GALVANIZED |
| HRETRO C-CLAMP25 | C-CLAMP FOR ROUND 2-1/2"-10GA - HVY DUTY - GALVANIZED |
| HRETRO C-CLAMP3 | C-CLAMP FOR ROUND 3"-10GA - HVY DUTY - GALVANIZED |
| HRETRO C-CLAMP35 | C-CLAMP FOR ROUND 3-1/2" - 10GA - HVY DUTY - GALVANIZED |
| HRETRO C-CLAMP4 | C-CLAMP FOR ROUND 4"-10GA - HVY DUTY - GALVANIZED |
| HRETRO C-CLAMP45 | C-CLAMP FOR ROUND 4-1/2"-10GA - HVY DUTY - GALVANIZED |
| HRETRO C-CLAMP5 | C-CLAMP FOR ROUND 5"-10GA - HVY DUTY - GALVANIZED |
| HRETRO C-CLAMP6 | C-CLAMP FOR ROUND RAIL 6-5/8"-10GA - HVY DUTY - GALVANIZED |
| HRETRO C-CLAMP8 | C-CLAMP FOR ROUND RAIL 8-5/8"-10GA - HVY DUTY - GALVANIZED |
| BHRETRO C-CLAMP15 | C-CLAMP FOR ROUND 1-5/8"-10GA - HVY DUTY - BLACK POWDER COATED |
| BHRETRO C-CLAMP2 | C-CLAMP FOR ROUND 2"-10GA - HVY DUTY - BLACK POWDER COATED |
| BHRETRO C-CLAMP25 | C-CLAMP FOR ROUND 2-1/2"-10GA - HVY DUTY - BLACK POWDER COATED |
| BHRETRO C-CLAMP3 | C-CLAMP FOR ROUND 3"-10GA - HVY DUTY - BLACK POWDER COATED |
| BHRETRO C-CLAMP35 | C-CLAMP FOR ROUND 3-1/2" - 10GA - HVY DUTY - BLACK POWDER COATED |
| BHRETRO C-CLAMP4 | C-CLAMP FOR ROUND 4"-10GA - HVY DUTY - BLACK POWDER COATED |
| BHRETRO C-CLAMP45 | C-CLAMP FOR ROUND 4-1/2"-10GA - HVY DUTY - BLACK POWDER COATED |
| BHRETRO C-CLAMP5 | C-CLAMP FOR ROUND 5"-10GA - HVY DUTY - BLACK POWDER COATED |
| BHRETRO C-CLAMP6 | C-CLAMP FOR ROUND 6-5/8"-10GA - HVY DUTY - BLACK POWDER COATED |
| BHRETRO C-CLAMP8 | C-CLAMP FOR ROUND RAIL 8-5/8"-10GA - HVY DUTY - BLACK POWDER COATED |

SECUREX Fence Fittings Retro Fit Fence Fittings

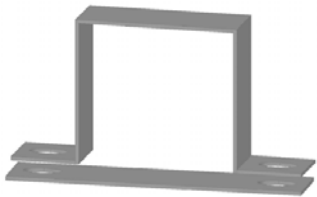
RETRO CLAMPS

For use with all Securex and Retro-Fit round rail fence frameworks

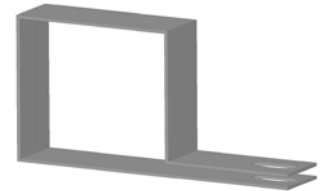


- Retro Clamps are used to join expanded metal panels to each other or tension wire.
- Fittings are available in standard or heavy duty grade, galvanized or black powder coated. Vinyl coated fittings and alternate colors are available upon request.
- For estimating, use one band less than the height of the fence. Use (2) 3/8" x 2" bolt for regular grade fittings or use (2) 5/8" x 2" bolt for heavy duty grade. Nuts and bolts do not ship with fittings.
- All fittings are also available in Niles standard green powder coat. Please add a "G" before the code number.

| PART # | DESCRIPTION |
|-----------------------------------|--|
| STANDARD FITTINGS - 11GA | |
| RETRO CLAMPS | BAR CLAMP - SMALL- PAIR- 11GA - REGULAR - GALVANIZED |
| BRETRO CLAMPS | BAR CLAMP - SMALL- PAIR -11GA - REGULAR - BLACK POWDER COATED |
| HEAVY DUTY FITTINGS - 10GA | |
| HRETRO CLAMPS | BAR CLAMP - SMALL- PAIR-10GA - HVY DUTY - GALVANIZED |
| BHRETRO CLAMPS | BAR CLAMP - SMALL- PAIR -10GA - HVY DUTY - BLACK POWDER COATED |
| | |



RETRO FIT CLAMPS AND BANDS FOR SQUARE AND SPECIALTY POSTS AND RAILS



| PART # | DESCRIPTION |
|---------------------------------|---|
| STANDARD FITTINGS - 11GA | |
| RETRO SQBAND2 | BAND FOR SQUARE 2" -11GA - REGULAR - GALVANIZED |
| RETRO SQBAND25 | BAND FOR SQUARE 2-1/2" - 11GA - REGULAR - GALVANIZED |
| RETRO SQBAND3 | BAND FOR SQUARE 3" -11GA - REGULAR - GALVANIZED |
| RETRO SQBAND35 | BAND FOR SQUARE 3-1/2" - 11GA - REGULAR - GALVANIZED |
| RETRO SQBAND4 | BAND FOR SQUARE 4" -11GA - REGULAR - GALVANIZED |
| RETRO SQBAND6 | BAND FOR SQUARE 6" -11GA - REGULAR - GALVANIZED |
| RETRO SQCH-CLAMP | CLAMP FOR SQUARE 1-5/8" - 11GA - REGULAR - GALVANIZED |
| RETRO SQCLAMP2 | CLAMP FOR SQUARE 2"-11GA - REGULAR - GALVANIZED |
| RETRO SQCLAMP25 | CLAMP FOR SQUARE 2-1/2" X 2-1/2" - 11GA - REGULAR - GALVANIZED |
| RETRO SQCLAMP3 | CLAMP FOR SQUARE 3"-11GA - REGULAR - GALVANIZED |
| RETRO SQCLAMP4 | CLAMP FOR SQUARE 4"-11GA - REGULAR - GALVANIZED |
| RETRO SQCLAMP6 | CLAMP FOR SQUARE 6"-11GA - REGULAR - GALVANIZED |
| | |
| RETRO SRHCLAMP25 | CLAMP FOR SR. H POST 2-1/4" X 1-7/8" - 11GA - REGULAR - GALVANIZED |
| RETRO STDC-CLAMP | CLAMP FOR STD. C POST 1.875" X 1.625" - 11GA - REGULAR - GALVANIZED |
| | |
| RETRO RGCLAMP15 | SUPER C - CLAMP FOR 1-5/8" X 1-1/4" CHANNEL RAIL - GALVANIZED |
| RETRO RGCLAMP3 | SUPER C - CLAMP FOR 3.25" X 2.50" -11GA - REGULAR - GALVANIZED |
| RETRO C-CLAMP32 | CLAMP FOR POST OR RAIL 3" X 2" - 11GA - REGULAR - GALVANIZED |
| | |

- Diamond fittings ship galvanized unless otherwise requested. All fittings are available in black or green powder coat. Please specify "B" or "G" in front of the part number when ordering.
- Diamond fittings use 5/16" x 2" nuts and bolts. Nuts and bolts do not ship with fittings and can be ordered separately.



Diamond Post Clamp Sets - used to attach top, mid and bottom rails to posts

| PART # | DESCRIPTION |
|--------------|--|
| PCSET278RHDG | DIAMOND 3" POST CLAMP SET - STEEL - GALVANIZED |
| PCSET400RHDG | DIAMOND 4" POST CLAMP SET - STEEL - GALVANIZED |

Diamond Bands - used to attach top, mid and bottom line rails to posts

| PART # | DESCRIPTION |
|--------|--|
| BAND25 | DIAMOND 2-1/2" BAND - STEEL - GALVANIZED |
| BAND3 | DIAMOND 3" BAND - STEEL - GALVANIZED |
| BAND4 | DIAMOND 4" BAND - STEEL - GALVANIZED |

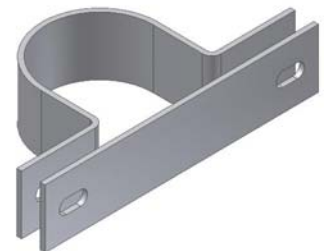


Diamond Line Rails - 1-5/8" x 13/16" c-channel line rail. Use as top, mid or bottom rail where required.

| PART # | DESCRIPTION |
|--------|---|
| LR10 | DIAMOND LINE RAIL 1-5/8" X 13/16" X 120" - GALVANIZED |
| LR8 | DIAMOND LINE RAIL 1-5/8" X 13/16" X 96" - GALVANIZED |

Diamond C-Clamp Assembly - used to attach expanded metal panels to line posts.

| PART # | DESCRIPTION |
|-----------|---|
| CCLAMP25 | DIAMOND 2-1/2" C-CLAMP - STEEL - GALVANIZED |
| PC278CHDG | DIAMOND 3" C-CLAMP - STEEL - GALVANIZED |
| PC400CHDG | DIAMOND 4" C-CLAMP - STEEL - GALVANIZED |
| CB725HDG | DIAMOND CLAMP BAR (7-1/4") - STEEL - GALVANIZED |



Diamond End Tensioner - used to attach expanded metal panels to terminal posts. Used in conjunction with latch clamps.

| PART # | DESCRIPTION |
|--------|---|
| TEN25 | DIAMOND 2-1/2" END TENSIONER - STEEL - GALVANIZED |
| TEN3 | DIAMOND 3" END TENSIONER - STEEL - GALVANIZED |
| TEN4 | DIAMOND 4" END TENSIONER - STEEL - GALVANIZED |

Diamond Latch Clamps - used to attach expanded metal panels to line rails and used at terminal posts with tensioners. Install every 12-15 inches on rails.

| PART # | DESCRIPTION |
|--------|--|
| LC3HDG | DIAMOND LATCH CLAMP - STEEL - GALVANIZED |

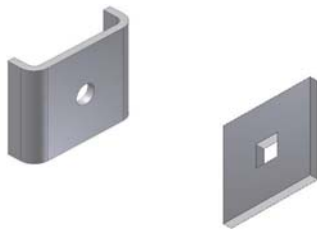


Diamond Fence Fittings

- Diamond fittings ship galvanized unless otherwise requested. All fittings are available in black or green powder coat. Please specify "B" or "G" in front of the part number when ordering.
- Diamond fittings use 5/16" x 2" nuts and bolts. Nuts and bolts do not ship with fittings and can be ordered separately.

Diamond Clamp Bars - used to join expanded metal panels to each other.

| PART # | DESCRIPTION |
|----------|---|
| CB725HDG | DIAMOND CLAMP BAR (7-1/4") - STEEL - GALVANIZED |

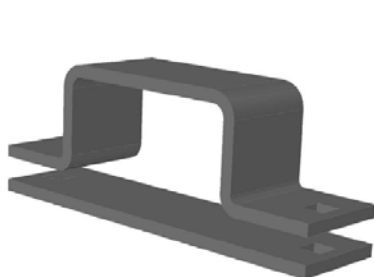


Diamond Washers (Square and U) - square washers are used with bands, post clamp sets and tensioners. U-washers are used with latch clamps to lock expanded metal into line rails.

| PART # | DESCRIPTION |
|-------------|---------------------------------------|
| G-W100SQHDG | DIAMOND 1" SQUARE WASHER - GALVANIZED |
| UW158SQ | DIAMOND 1-5/8" U WASHER - GALVANIZED |

Super C Fence and Fittings

| PART # | DESCRIPTION |
|---------------------------------------|--|
| SUPER C FRAMEWORK AND FITTINGS | |
| COVERSTRAP | SUPER C COVERSTRAP - GALVANIZED |
| SCBOULEVARDS | SUPER C BOULEVARDS - GALVANIZED |
| SCBARBARM | SUPER C BARBARM - GALVANIZED |
| SCREC | SUPER C RAIL ENDS - 1 HOLE - GALVANIZED |
| SCSLEEVES | SUPER C RAIL SLEEVES FOR 1-5/8 RAIL - GALVANIZED |
| SCPOST | SUPER C POST - .150 HEAVY WALL - GALVANIZED |
| SCRAIL24 | SUPER C RAIL - 1-5/8" - GALVANIZED |
| RETRO RGCLAMP15 | SUPER C - CLAMP FOR 1-5/8" X 1-1/4" CHANNEL RAIL - GALVANIZED |
| RETRO RGCLAMP3 | SUPER C - CLAMP FOR 3.25" X 2.50" -11GA - REGULAR - GALVANIZED |
| CB45 | SUPER C - 4-1/2" BOLT, NUT AND WASHER SET - SOLD SEPERATELY |
| RETRO CLAMPS | BAR CLAMP - SMALL - PAIR - 11GA - REGULAR- GALVANIZED |



OFFSET LINE RAIL CLAMPS (BOULEVARDS) - use with all SECUREX and Retro Fit round framework to set rails flush to the attack side of the fence. Also available in 12ga and specialty sizes by request. Boulevards do not ship with nuts or bolts.

| PART # | DESCRIPTION |
|---------------------------------|--|
| STANDARD FITTINGS - 14GA | |
| OSLRC615 | OFFSET LINE RAIL CLAMP 6-5/8" X 1-5/8" - 14GA - GALVANIZED |
| OSLRC4515 | OFFSET LINE RAIL CLAMP 4-1/2" X 1-5/8" - 14GA - GALVANIZED |
| OSLRC415 | OFFSET LINE RAIL CLAMP 4" X 1-5/8" - 14GA - GALVANIZED |
| OSLRC35158 | OFFSET LINE RAIL CLAMP 3-1/2" X 1-5/8" - 14GA - GALVANIZED |
| OSLRC3158 | OFFSET LINE RAIL CLAMP 3" X 1-5/8" - 14GA - GALVANIZED |

SECURITY EXTRAS AND MISCELLANEOUS - Call for information on alternate sizes and finishes.

| PART # | DESCRIPTION |
|--|---|
| SECURITY FENCING - NUTS AND BOLTS | |
| CB-3114 | 3/8" X 1-1/4" CARRIAGE BOLT WITH NUT |
| CB-3212 | 3/8" X 2-1/2" CARRIAGE BOLT WITH NUT |
| CB-5114H | 5/16" X 1-1/4" CARRIAGE BOLT WITH NUT |
| CB3200 | 3/8" X 2" CARRIAGE BOLT WITH NUT |
| CB382BAZ | 3/8" X 2" CARRIAGE BOLT WITH BREAKAWY NUT - ZINC |
| CB5162 | 5/16" X 2" CARRIAGE BOLT WITH NUT |
| CB5162BA | 5/16" X 2" CARRIAGE BOLT WITH BREAKAWAY NUT - ZINC |
| CB5162BASS | 5/16" X 2" CARRIAGE BOLT WITH BREAKAWAY NUT - STAINLESS STEEL |
| BANUT516 | 5/16" BREAKAWAY NUT - ZINC |
| CBBA38NUT | 3/8-16 BREAKAWAY NUT - ZINC |
| CBBA38NUTSS | 3/8-16 BREAKAWAY NUT - STAINLESS STEEL |
| GRB582 | 5/8" X 2" GUARD RAIL BOLT |
| RZSSHELA24 | RAZOR WIRE 24" HELA COIL - STAINLESS, STAINLESS W/ TIES |
| SECURITY MESH - INTERIOR | |
| SECUREX2375CLIP | SECUREX 2.375" ROUND CLIPS FOR SECURITY MESH - BOX 1000 |
| SECUREX3CLIP | SECUREX 3" SQUARE CLIPS FOR SECURITY MESH - BOX 500 |
| SECURITY MESH - EXTERIOR/INTERIOR | |
| WS034009F4 | WALL SPIKE - 3/4 #9 FLAT 48" WIDE |
| WS034009F5 | WALL SPIKE - 3/4 #9 FLAT 60" WIDE |
| US034009F4 | BIRD SPIKE - 3/4 #9 FLAT 48" WIDE |
| US034009F5 | BIRD SPIKE - 3/4 #9 FLAT 60" WIDE |
| F400U12 | #400 12FT U-EDGING - 18GA - MILL FINISH |
| F400U12GALV | #400 12FT U-EDGING - 18GA - GALVANIZED |
| F401U12 | #401 12FT U-EDGING - 18GA - MILL FINISH |
| F401U12GALV | #401 12FT U-EDGING - 18GA - GALVANIZED |
| SECURITY CAGES | |
| GBC-205B | END RAIL CLAMP 2" X 1-5/8" - SECURITY CAGE ROOF CLAMP |
| FF25 | FLOOR FLANGE 2-1/2" - GALVANIZED - SECURITY CAGE |

Niles Fence and Security, LLC



Niles Fence and Security
301 N. Pleasant Avenue, Niles, Ohio 44446
info@nilesfence.com 800-321-7464 f:330-299-0329
WWW.NILESFENCE.COM



Securex Fencing

Retro Fit Fencing

Super C Fencing

Diamond Fencing

Security Cages